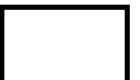
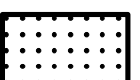

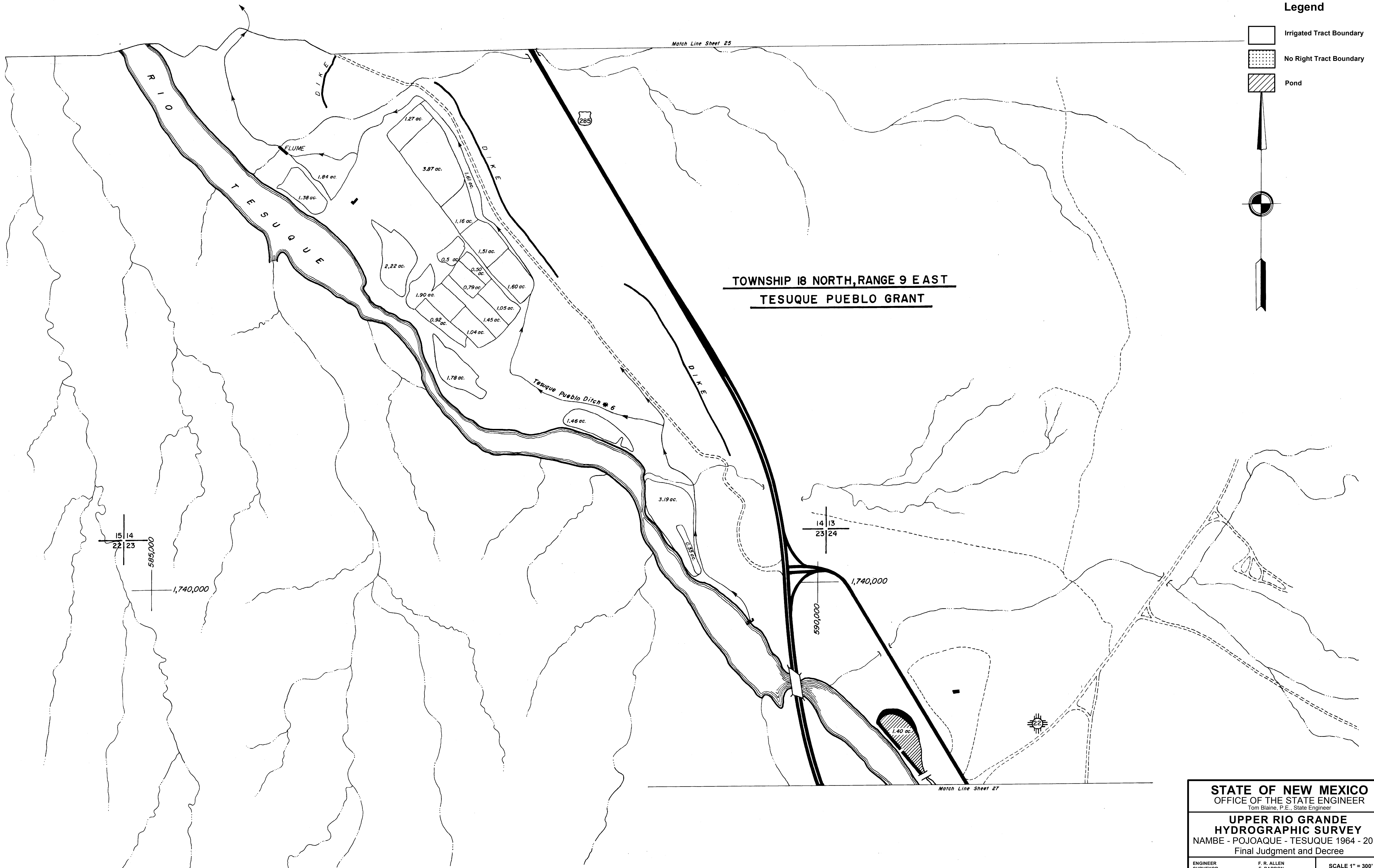
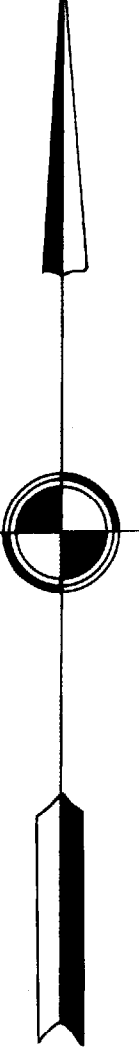


Legend

-  Irrigated Tract Boundary
-  No Right Tract Boundary
-  Pond



TOWNSHIP 18 NORTH, RANGE 9 EAST
TESUQUE PUEBLO GRANT

STATE OF NEW MEXICO
 OFFICE OF THE STATE ENGINEER
 Tom Blaine, P.E., State Engineer

UPPER RIO GRANDE
HYDROGRAPHIC SURVEY
 NAMBE - POJOAQUE - TESUQUE 1964 - 2017
 Final Judgment and Decree

ENGINEER SURVEYOR STEREOCOPIATION TRACED BY APPROVED	F. R. ALLEN F. BARRON J. L. THOMAS A. BACIGALUPA	SCALE 1" = 300' SHEET NO. 26
--	---	---------------------------------